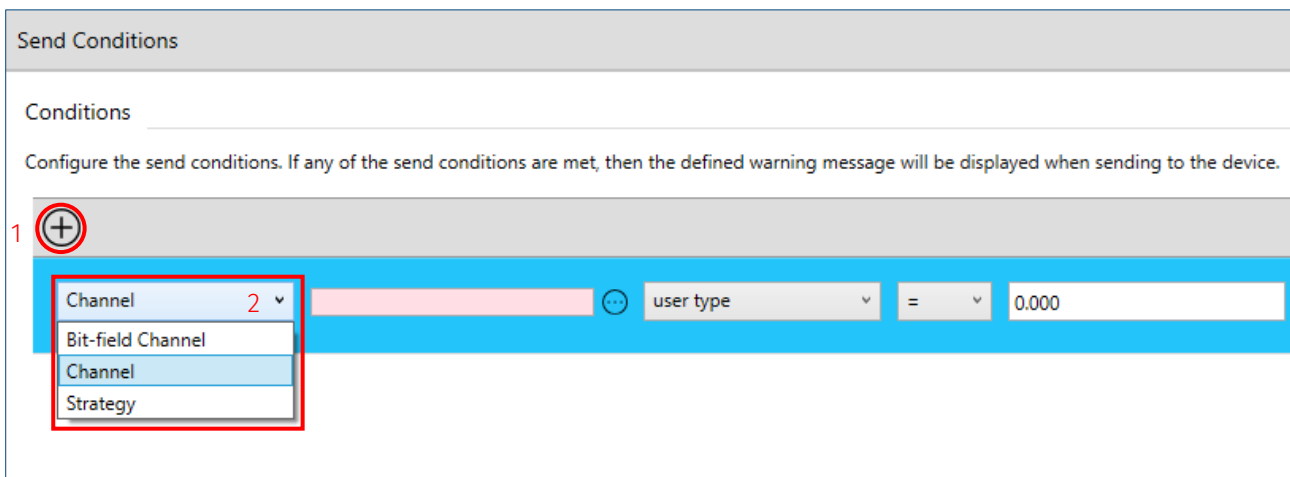


## Send conditions overview

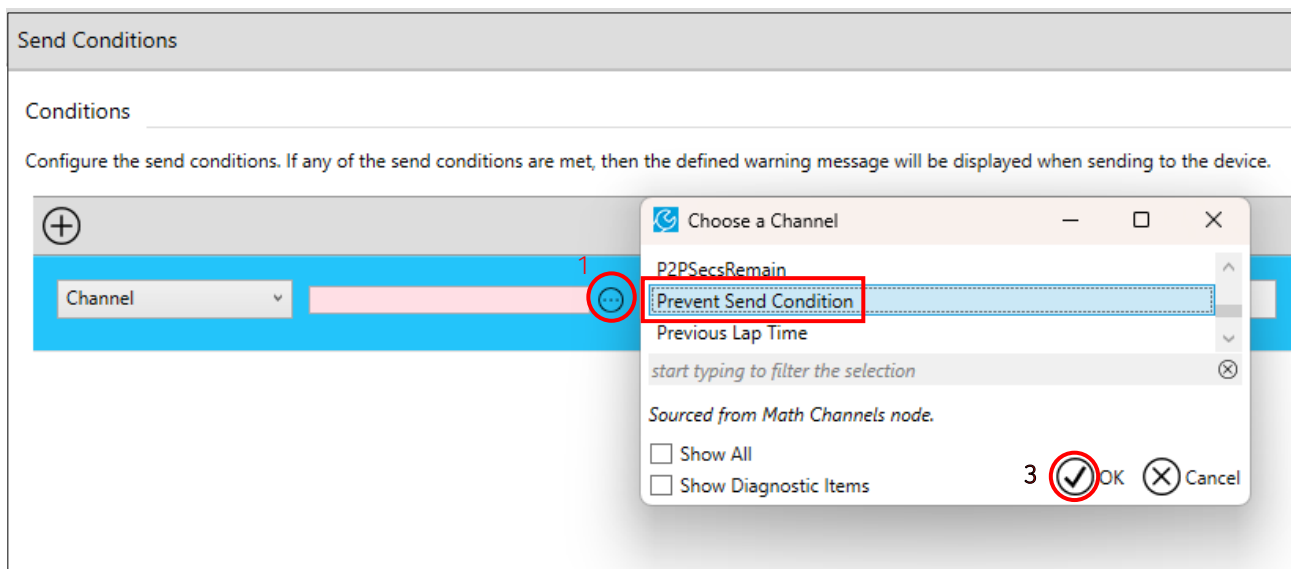
The **Send Conditions** node is used to configure any conditions that trigger a warning if send conditions have not been met before a setup is sent. If the send conditions are not met a pop-up warning is displayed. You can view details of the error and either cancel or proceed with the send.

## Configure send conditions

To add a new send condition, click the + tool (1), and then select the type of condition (Bit-field Channel, Channel, or Strategy) from the dropdown menu (2). You can add multiple send conditions.



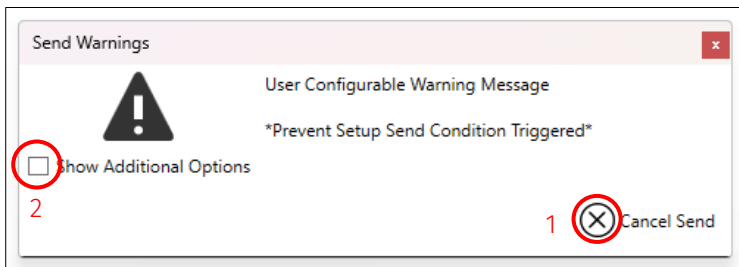
Once you select a condition type, click the 'browse' icon (1), select the channel from the dialog box (2), and click **OK** (3) to select the channel.



You can configure the condition that triggers a prevent send condition (1) and configure a custom warning message (2). Use the 'bin' tool to delete a send condition (3).



If you attempt to send a setup when one of the send conditions is true, a warning box is displayed with the warning message from the triggered send condition (see above). Make sure that this message suggests a solution so that the error can be corrected before you attempt to send the setup again. You can cancel the setup send (1.) or **Show Additional Options** (2).



If you select **Show Additional Warnings**, you have the option to 'Override Warning(s) and Continue Sending' (1).

