

Cosworth

Knowledge Base Article

QKB 0017: Revision 1 Pi Toolbox – License Transfer



Author	Brad Ehringer (brad.ehringer@Cosworth.com)
Date	24 April 2018

Overview

This guide details how to transfer a Toolbox license from one PC to another. The PCs will need to have the same major version of Toolbox downloaded on both machines for license continuity. A means of transferring the file will also be needed (i.e. USB flash drive, etc.).

Generating a Recipient File

Once you have Toolbox downloaded on the receiving machine, navigate to importing a license through Help → Configure License → Import → Generate Recipient File.

Cosworth Software Licensing Configuration Tool

Use this tool to add, import, transfer and loan Cosworth product licenses from local and remote servers.

The order of the servers dictates the order in which they will be queried for licenses. Your local machine is always first.

Manage Licenses: + Add **Import** ⇄ Transfer ⓘ Loan ⓘ Return ⇄ Surrender | Manage Remote Servers: + ↑ ↓ ↺ 🗑

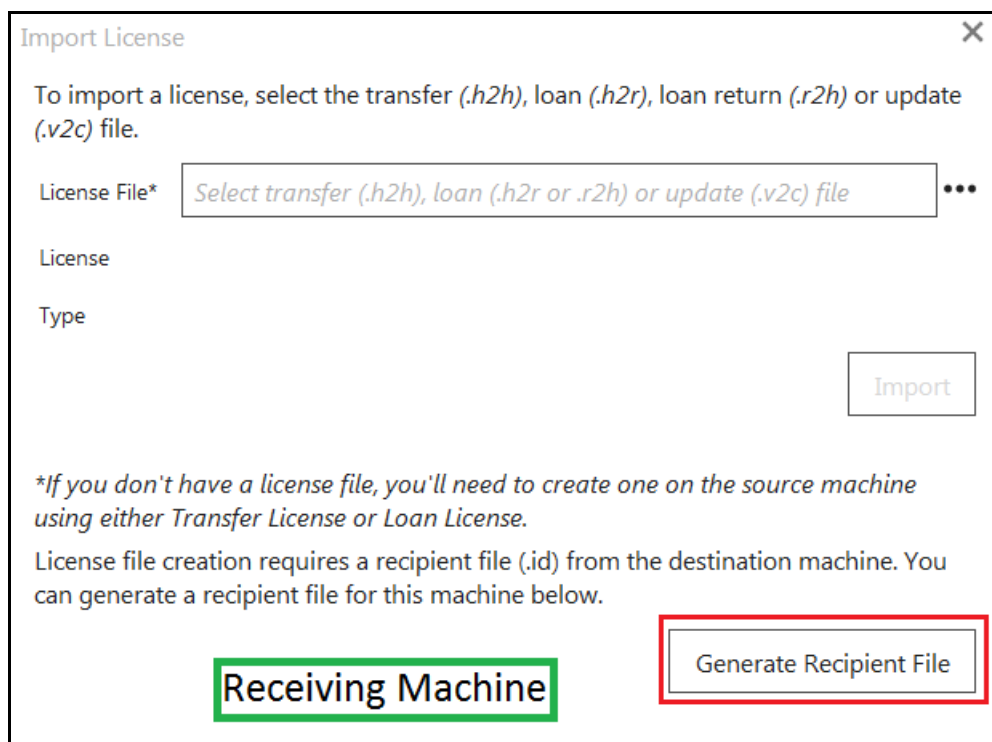
Server	Description	
localhost	This computer	
License: 607077936059801529		
Product	Expiry Date	Network Seats
Pi Toolbox 9 Ultra - Node Locked	12/31/2018	Node Locked
License: 380292321244758021		
Product	Expiry Date	Network Seats
Pi Toolbox 9 Ultra - Node Locked	12/31/2017	Node Locked

☐ Enable remote servers

Receiving Machine

Version 1.1 (Build 105)

Here you will generate a recipient file, ensure that your laptop is connected to the internet. This file will be in the format of a ".id" that will then be transferred to the sending machine.



Import License

To import a license, select the transfer (.h2h), loan (.h2r), loan return (.r2h) or update (.v2c) file.

License File*

License

Type

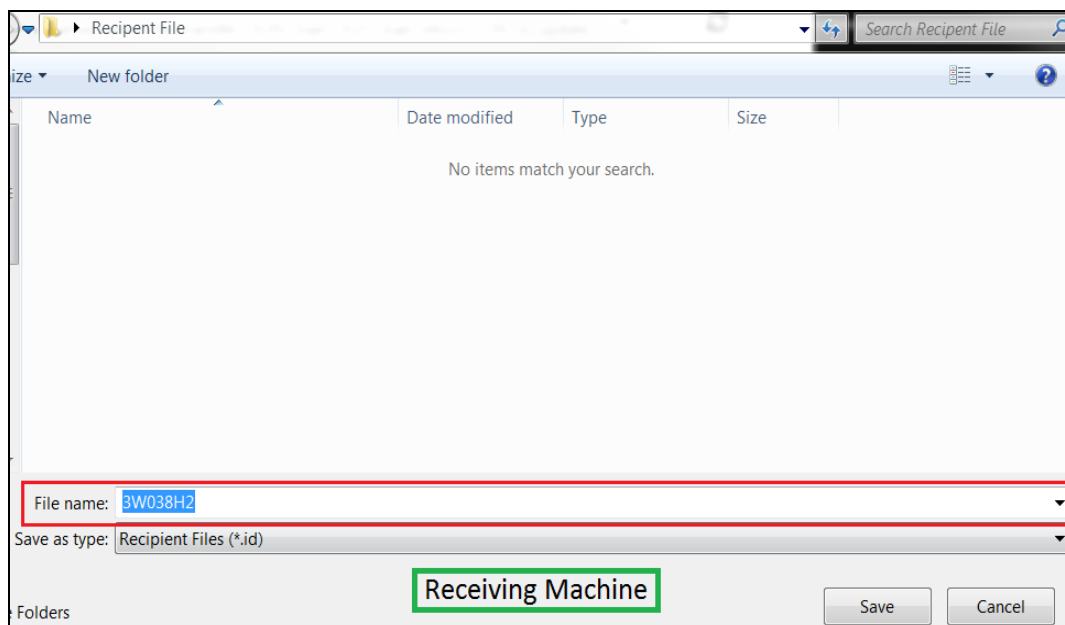
Import

**If you don't have a license file, you'll need to create one on the source machine using either Transfer License or Loan License.*

License file creation requires a recipient file (.id) from the destination machine. You can generate a recipient file for this machine below.

Receiving Machine **Generate Recipient File**

The .id file is your new machine and Toolbox unique id, this will allow the Transfer File to be generated. Copy this file onto a flash drive to then import onto your old machine.



Recipient File

Search Recipient File

Name Date modified Type Size

No items match your search.

File name:

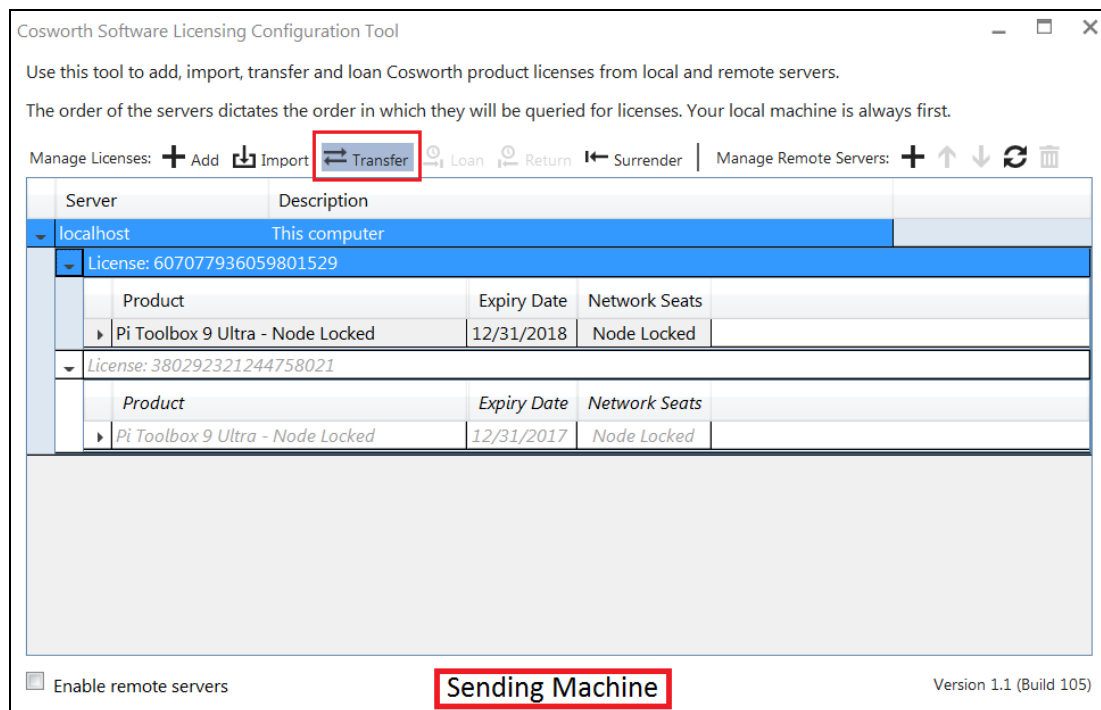
Save as type: Recipient Files (*.id)

Receiving Machine

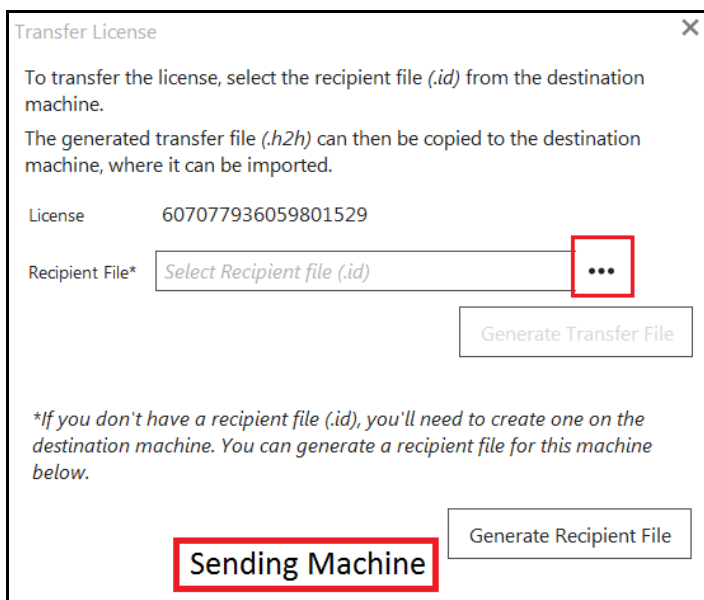
Save Cancel

Generating a Transfer File

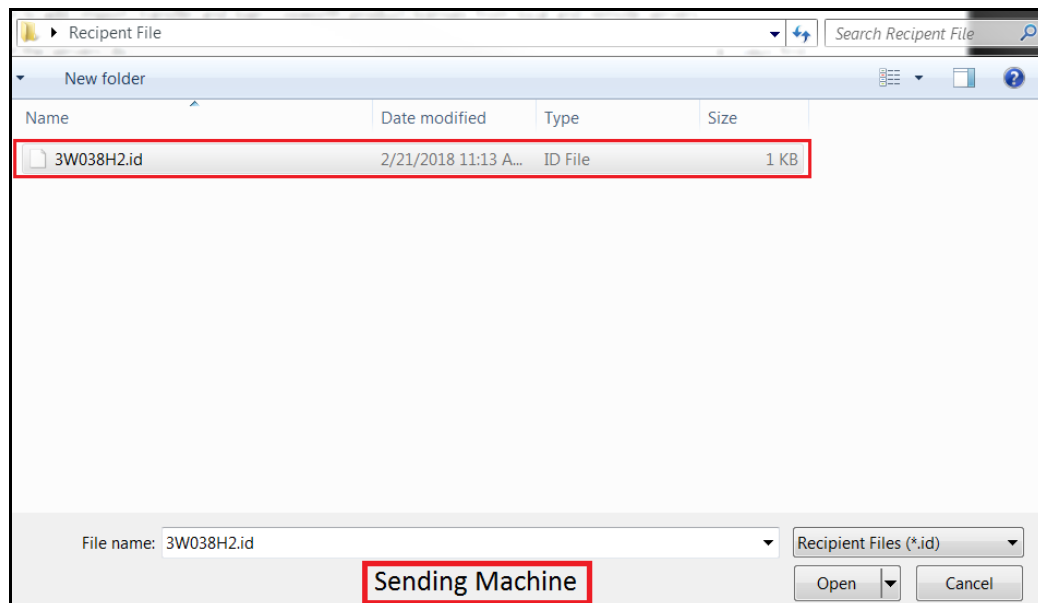
The following steps will be conducted on the old machine, open Toolbox and navigate back to Configure Licensing. You will need to select the license that is to be transferred and click the “Transfer” node.



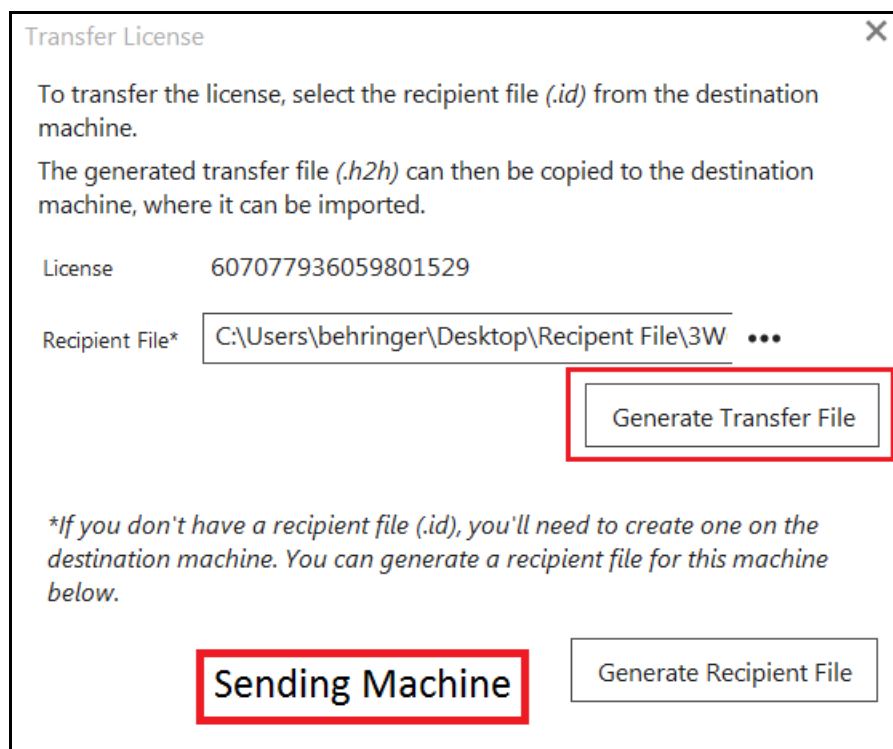
From here you will be creating a “Transfer File” using the “.id” file created earlier.



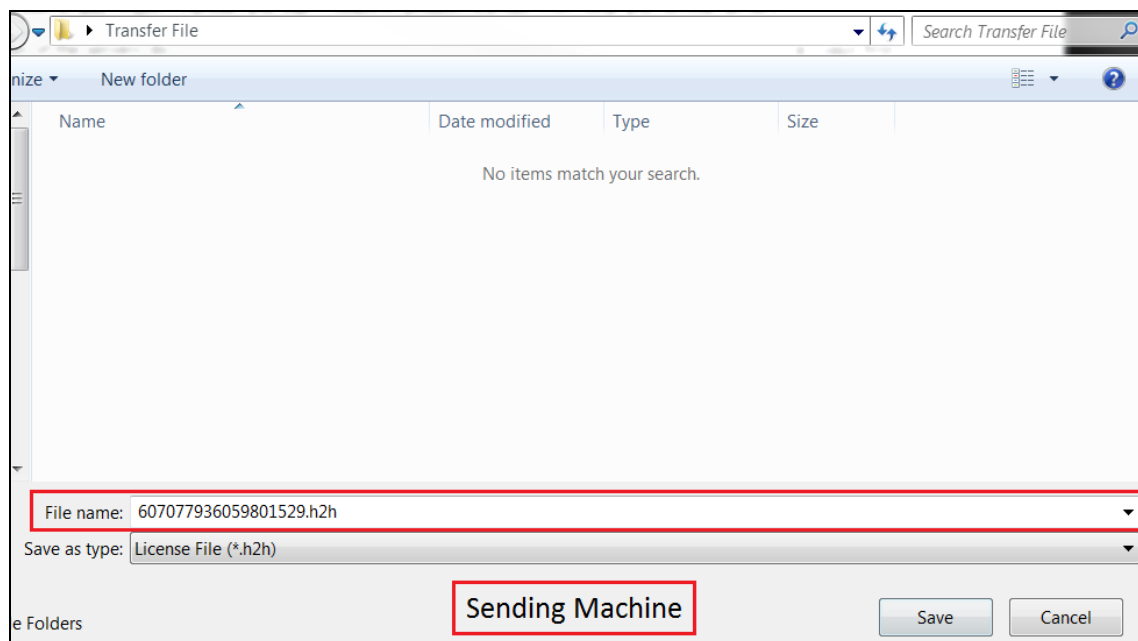
Import the recipient's ".id" file.



Once the ".id" file has been imported, the "Transfer File" can be generated. Ensure this is saved as it will be needed on the new machine.

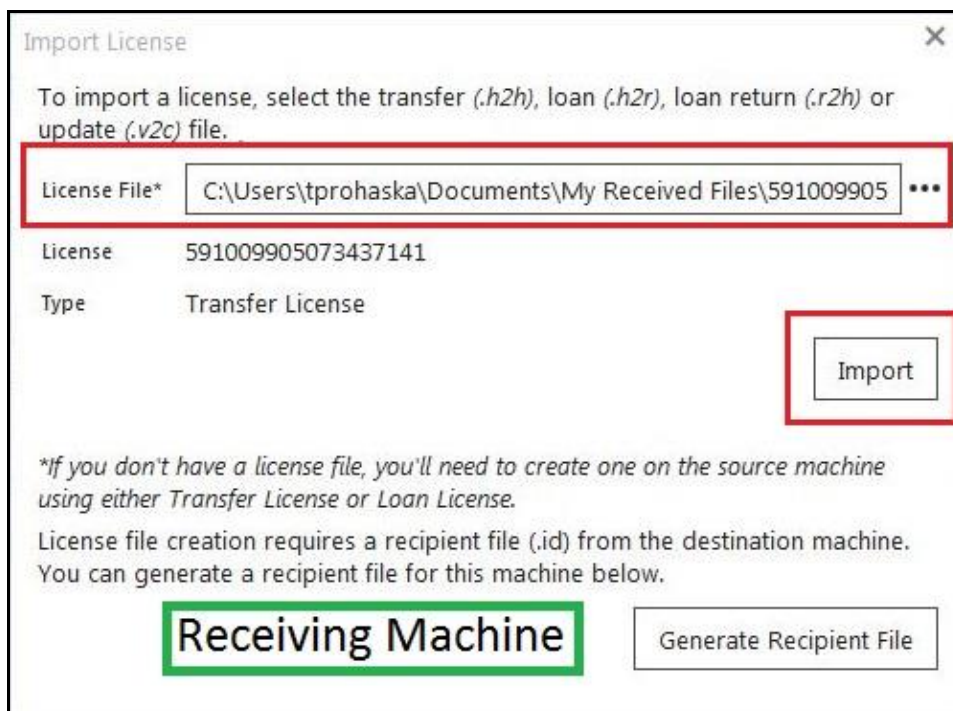


Here the recently created “.h2h” file is shown, this will facilitate the license transfer in between machines. Ensure after this has been created and saved that Toolbox is closed on the old machine. This allows the license to be available for the new machine.



Importing the .h2h File

The final step is activating the license on the new machine. Ensure that the machine has an active internet connection. Open Toolbox on the new machine and navigate to the “Configure Licensing” node. Once there, click on the “Import” tab and you will see a “.h2h” file is needed for import. Using the saved “.h2h” file on, click on the ... and navigate to the location the “.h2h” is stored. Once the “.h2h” file has populated you will be able to transfer your license. Click on the now active “Import” button and the transfer will begin.



Once the transfer is complete the new device will be ready to use.