

## Toolbox - Add Media

Author:	Alex.reid@cosworth.com
Date:	25/03/2014 13:43

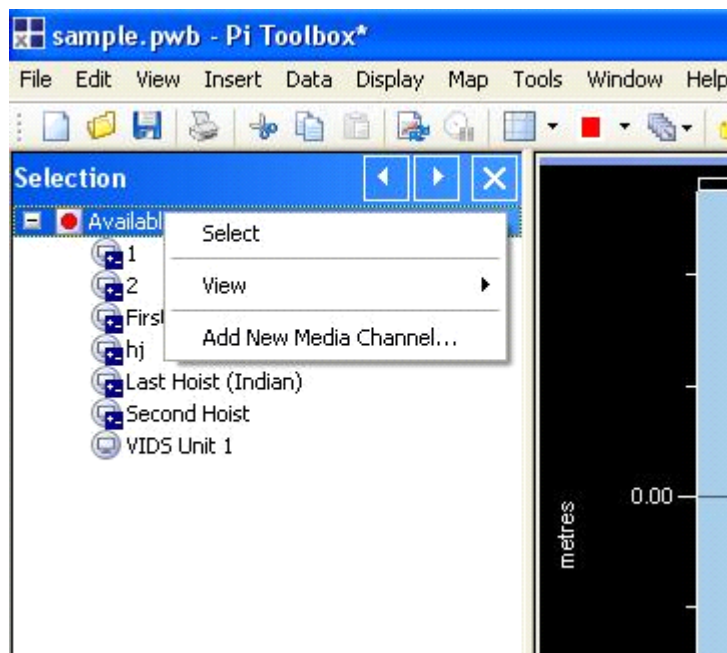
### Overview

This guide is used when manually adding video to Toolbox for synchronised viewing.

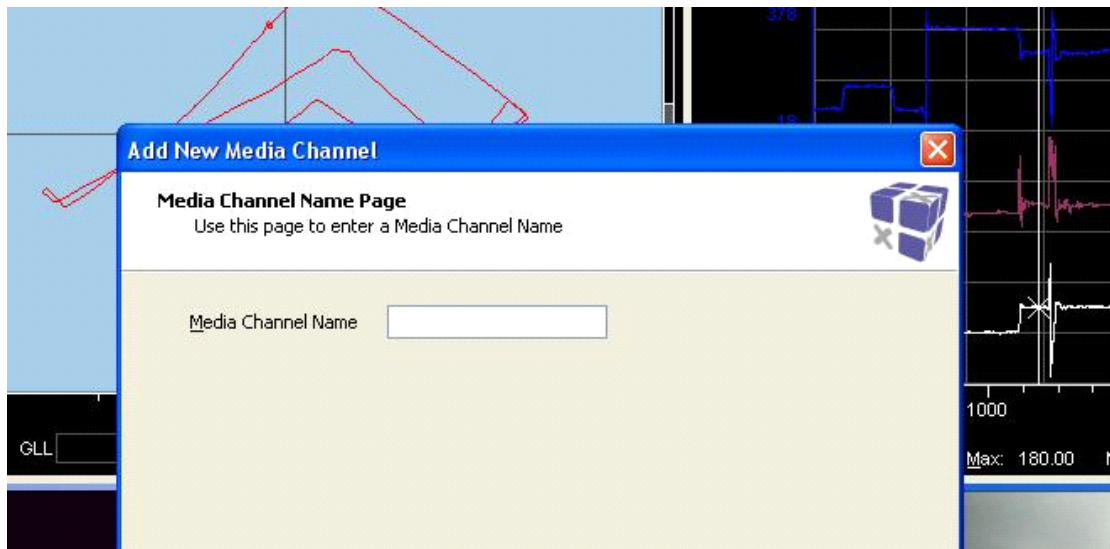
### Detail

Video can be added manually into Pi Toolbox as well as from a VIDS II recorder. The format of the file needs to be in .pds to add video as once the video and data are synchronised the offset will be stored in the .pds file. If you have imported the data from ASCII for example you will need to export the outing first into .pds format. Load in the .pds file and proceed to add the new video as shown below.

- Add a new 'media' window.
- Select the media window and '**ALT 2**'
- Right click on 'Available Media'



- Choose 'Add New Media Channel'



- Give it a name.
- Browse to the video file.
- Hit next a couple of times and the wizard will start adding the file.

To make sure that the video is synced with the onboard one we have to film something like GPS time or line it up with a known point.

Once the video is in Toolbox, click the media window so it is selected and **ALT 2** to open selection. Your imported video will be in the top half on the left hand side. A double click will load the file into the media window. Once the media file has been added, play to the part where GPS time can be seen or the sync point. It would be worth now selecting GPS time in a T/D chart or channel display window. You can use the arrow keys to move a frame forward or backward so you can get it just when the time changes to know you are close. Pause the video right click on the video window and select 'Enter Offsetting'. The video will hold shot and if you navigate in the time distance chart until the GPS time matches the one seen in the video. Once you are at this stage simply right click on the media window background and select 'Apply Offset'. The data set will now remember where it is in relation to the video even if you de select the video or load in a different data set, restart your computer etc.